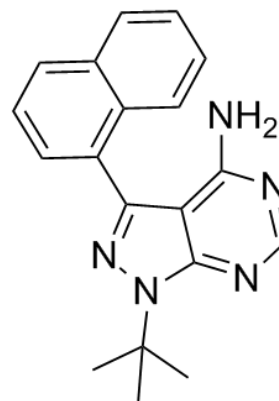


Product Name : 1-Naphthyl PP1
Cat. No. : PC-43792
CAS No. : 221243-82-9
Molecular Formula : C₁₉H₁₉N₅
Molecular Weight : 317.3877
Target : Src
Solubility : DMSO: 14.25 mg/mL



Biological Activity

1-Naphthyl PP1 (1-NA-PP1) is a potent **Src family kinases** with IC₅₀ of 1.0/0.6/0.6 μM for v-Sr/c-Fyn/c-Abl. 1-NA-PP1 is less potent for CDK2 and CaMK II. 1-NA-PP1 also inhibits Kin28 and Srb10 kinases. 1-NA-PP1 potently blocks prostate cancer cell proliferation by inducing G₂/M arrest.

References

- Bishop AC, et al. *Nature*. 2000 Sep 21;407(6802):395-401.
Kanin EI, et al. *Proc Natl Acad Sci U S A*. 2007 Apr 3;104(14):5812-7.
Liu Y, et al. *Mol Cell Biol*. 2004 Feb;24(4):1721-35.

Caution: Product has not been fully validated for medical applications. Lab Use Only!

E-mail: tech@probechem.com